

Special Features

Artist features	7
Featured Gallery	8
Workshop	10

Regular Features

President's Report	1
Treasurer's Report	2
State Report - ACT	2
State Report - NSW	3
State Report - NT	3
State Report - QLD	5
State Report - SA	5
State Report - TAS	5
State Report - VIC	6
State Report - WA	6

Listings

Exhibitions	12
Call to Artists	14
Grants	14
Opportunities	14

© 2006 AUSGLASS
a non-profit organisation
Copy of and/or use of articles
in this newsletter prohibited
without written permission of
AUSGLASS

President's Report

Keith Rowe

PRESIDENT@AUSGLASS.ORG.AU

Dear Members and friends,

Welcome back, I hope your festive time was a restful and joyous time. We had our F2F in Jan with the state reps. This was of such great a benefit in understanding the needs of the membership. We were able to pass on to the reps the work that was required of them. It was considered such a good outing that it should be done on a regular basis. There is a special big thanks that goes to Damian Connellan, our departing treasurer of 6 years. He has taken Ausglass from a survival mode to a proactive group with regard to our finances. His help during my first year has been incalculable. Thank you Damian. Due to the stabilizing of our economics we were able to help fund a workshop at the Canberra Glass Works. Big thanks go to Holly Grace, Mel George and Clare Belfrage, for initiating and organizing. I attended an artists evening with Alistair and Rish Gordon who have been supporters of Ausglass for many years. More years than they wish to admit. At the same time I gave a brief overview of the 2011 conference in Sydney. There are a few loose ends to tie up and we will be able to unveil the details soon.

Part of the F2F was dealing with our progress. One of the items on the constant agenda has been the web page. You will be pleased to hear that the website committee (Arthur Sale, Simon James, Lisa Cahill and Greg Ash) are in the initial stages of updating the website. We will endeavor to keep you posted on this. Our student membership is a very small proportion of our total, considering historically this is where we get new members, it was decided to drop the annual rate to \$30 pa. Getem young getem for life, I remember this as a kid. Congratulations to Susan Moore (Hot glass) in winning the Vicki Torr on line gallery prize. Su Bishop (Flame worker 10), Kate Baker-(Kiln Form 8), Anne Sorensen (Kiln Form 7) and Steven Dounton (Hot Glass 7) were the next in line. Thanks for your input.

Maureen Williams (our last past president) will now be the executor of the Vicki Torr Fund. Thanks Maureen. So keep your eyes open for new members and help your local states. At present Vic has the most with WA coming second.

Spare a thought for those that Mother Nature has not been kind to and share a smile with your neighbour seya next time.

Keith Rowe

Treasurers Report

Simon James

TREASURER@AUSGLASS.ORG.AU

Dear Members & Friends

I write to you for the first time as the acting treasurer of our association. To say that Damian Connellan is a very hard act to follow is a huge understatement. His achievements for Ausglass are too numerous to list here but I will include just a few :-

- o immensely improved the financial health of the organisation;
- o financial organiser and regulator of numerous Ausglass conferences;
- o sourced and managed the pro bono legal work with Minter Ellison to update the articles of association;
- o and he gained deductible gift status for Ausglass through the ATO.

I'd estimate that Damian worked voluntarily for Ausglass in excess of 3 working days per month over his 6 years as treasurer. Damian – thanks for every thing. Especially for the well constructed handover that we're currently working through together.

The Board is working with AbaF (Australian Business Arts Foundation) to source a replacement qualified CPA willing to work pro bono for Ausglass. Damian had started this process 12 months ago but you can appreciate that there are many organisations such as ours, out looking for an accountant with a good heart and sound business skills willing to donate their time. We'll keep you posted as to how this goes. At the next board meeting (in March) we will work out which board member will be the treasurer until a certified CPA can be found. If you know of a reliable and responsible CPA who would be willing to help please put them in touch with either Keith or anyone of the board.

Ausglass is in good financial order. We are in between conferences and so the board is working (with the expert guidance of Marian Schoen) to deliver new and improved services to you – the members. One initiative we are working on is online membership renewals. This will deliver to members the ability to safely and securely pay for their membership from the Ausglass website using credit cards. Arthur Sale, your webmaster, has investigated the possible options and together we are working with the book keeper to get this in place by the time the annual renewals take place in May 2010. Arthur has been very busy with Ausglass. He is not only working on the web sub-committee to design and implement a new website; he has updated the current website to remove the orange and he has started making the necessary changes to implement electronic payments. A huge thank you goes to Arthur for his tireless work and expertise.

So, there's lots happening behind the scenes to return value to the Ausglass membership. Watch this space!
Cheers

Simon

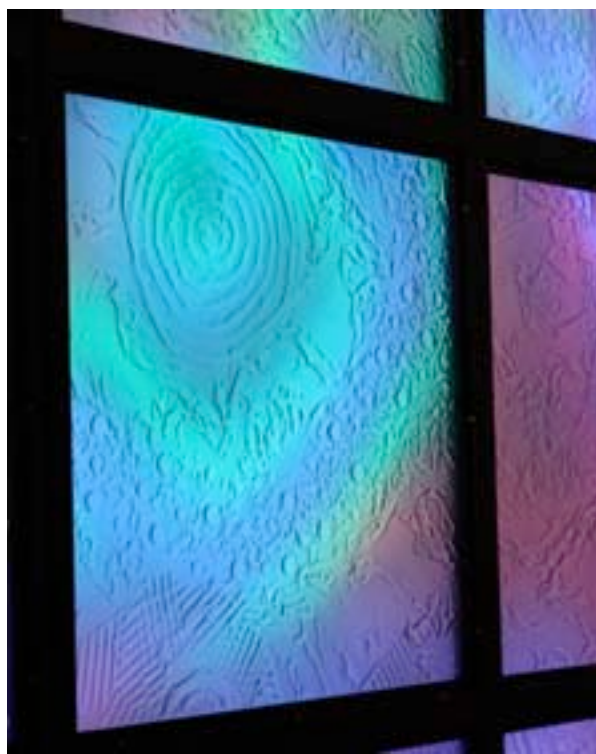
AUSGLASS State Reports

ACT – Ellen Collins

ACTREP@AUSGLASS.ORG.AU

Not a heap to report from the nation's capital but there has been quite a bit happening at the Canberra Glassworks over the last month. Warren Langley has enlisted the assistance of several local artists to complete a fantastic glass and LED installation piece called "Microscopia" (3mx6m). The piece will be displayed in the Australian Pavillion at the Shanghai World Expo 2010 before returning to Canberra to be installed permanently in the new Women and Children's Hospital.

Master engraver Alistair Gordon has recently completed a very successful workshop on copper wheel engraving processes that



was sponsored by Ausglass. The eight participants learnt a heap of new skills that included cameo and intaglio engraving techniques and also wheel profiling. We hope to see some fabulous work in the future that displays some of these new skills.

Congratulations to Amy Schleif who was recently featured in New Glass magazine. Kirstie Rea will soon be heading up to Sydney on a very regular basis to share her wealth of knowledge with the lucky students at the Sydney College of the Arts. The Asialink exhibition *White Hot* is still touring through Asia and has just opened in Manila.



Some exhibitions and events coming up around the region are:
Craft Act presents *Stack* by Jonathan Baskett in Gallery 2 and in the Crucible Showcase
Made in Japan by Elizabeth Kelly from 11 February - 20 March 2010
Mamana Mamanta by Luna Ryan and Jock Puautjimi will be showing at the Wagga Wagga Art Gallery from 15 January - 17 March
Luna Ryan will also be presenting her work *glass tableaux and tunnels* at Gallery Bodalla from 20 February - 28 March
An artist presentation by Deborah Horrell at the Canberra Glassworks on Wednesday 3rd March 6pm-6.30pm
The inaugural National Student Art Glass Prize will be announced in Wagga Wagga on 12 March 2010.
Maureen Williams in *Altered Views: new work 4* - 23 March 2010 at Beaver Galleries
Powerhouse exhibition at the Canberra Glassworks 17th March - 29th April
Nikki Main will be demonstrating her glass making techniques at the Canberra Glassworks on Sunday 21st March 11am-3pm

Australian Galleries in Melbourne will present *10 Contemporary Australian Glass Artists: A glass act* featuring work from Clare Belfrage, Cobi Cockburn, Mel Douglas, Tim Edwards, Wendy Fairclough, Brian Hirst, Jessica Loughlin, Kirstie Rea, Tom Rowney, Richard Whiteley. 10-28 March

An artist talk by Nikki Main on Saturday 3rd April 10.30am-12.00pm at the Canberra Glassworks

Ruth Oliphant and Lee Mathers will feature in *Gather* at the Sabbia Gallery in Sydney from 21 April - 15 May
Beaver Galleries will present *Sublime* by Holly Grace from 6 - 25 May
Kate Baker and Lisa Cahill will feature at the Canberra Glassworks 7th May - 17th June
Canberra Glassworks will be exhibiting Cobi Cockburn's work from 23rd June- 5th August
Ranamok 2010 will be on at the Canberra Glassworks from 11th August - 24th Sept

Huge congratulations to Brian Corr and Holly Grace who have recently been accepted as finalists in the Tom Malone Prize.

NSW – Polina Gavria

NSWREP@AUSGLASS.ORG.AU

No report Submitted

Congratulations to Kate Baker and Lee Mathers, finalists in the *Emerge* at Bullseye Glass, Portland USA (-Ed)

NT – Andrea McKey

NTREP@AUSGLASS.ORG.AU

It has been a rather quiet time here in the Top End with many Darwinites fleeing the city for enjoyable (or not) times with rellies down South. We have had plenty of rain, lots of wind (despite many politicians being away) and enormous quantities of mould growing on boots, belts, ceilings and just about any other available surface.

So what's new in the Top End Ausglass group? We are growing in numbers. Our membership now stands at 6 and we are not done yet. Our next group get together is planned for March and Jon Firth is giving a vitrigraph demonstration.

This year will see quite an array of activities for glassies in Darwin with a variety of classes on offer at Territory Craft as well as another Focus on Glass exhibition. We will continue to promote Ausglass at classes and exhibitions in order to lift the profile and the membership.

I met with other Ausglass state reps and board members at the face to face in Sydney in January. This was a great opportunity to meet, catch up and discuss Ausglass issues. I found it a valuable and very enjoyable experience. It looks like the conference planning for 2011 in Sydney is well on track and sounds very interesting. It was good to have the meeting at the Sydney College of the Arts as it gave me an insight on where it will all be happening in 2011.

QLD – Terry Eager & Shar Moorman

QLDREP@AUSGLASS.ORG.AU

Terry Eager- Northern Queensland

Greetings from the wet north. It was great to meet the board and other reps at the face to face meeting in Sydney. We've been dodging a couple of cyclones the last few weeks - there is nothing like a tropical downpour and there has been a few of those! Always a bit dodgy with the kiln when you don't know if the power will go out again or not! Managed to finish off my pieces for the Tablelands Perimeters/Parameters exhibition which is on at the Tablelands Regional Gallery till the end of February, though. Things go fairly quiet up here this time of year as tourist numbers go down (personally I think it is a great time to visit!). If any members are planning a holiday up this way this year please get in touch via gldrep@ausglass.org.au and I would be more than happy to suggest places to go in general and also where to see some local glass art!

(Above) *Cultivated* by Terry Eager



Shar Moorman Southern QLD/ northern N.S.W.

I attended meeting at SCA premises in Rozelle on the 17 and 18th of January, witnessing the energy of the Ausglass board members together with contribution from State Representatives, the plans, strategies, foundations and the creation of fundamental building blocks for what is going to be an **amazing 2011 conference**, glass knowledge for beginning/recreational/advanced artists, Students, Collectors, and Galleries. And what a perfect canvas (venue) for the 2011 conference, Sydney College of the Arts in Rozelle. Being introduced to other State representative face to face, discussing regional issues based on a local membership communications was invaluable.

SA - Jennifer Taylor & Kristel Britcher

SAREP@AUSGLASS.ORG.AU

South Australian glassies have started the year off in party mode with Adelaide being host to the Fringe Festival and the biennial Festival of Arts this February so there is plenty to see and do. Karen Cunningham, Amanda King and Kumiko Nakajima are participating in a group show *Quirk* at Art Images Gallery in Norwood as part of this year's Fringe. The show is open until February 28th.

Jam Factory are currently renovating their shop in collaboration with renowned furniture designer Khai Liew and will be hosting a cocktail opening on February 23rd. The Jam also have three new associates on board this year, Andrea Fiebig, Kristel Britcher and Madeline Prowd, Aogu Takaon

Brenden Scott French and Janice Vitkovsky are exhibiting as part of *The Sum of Parts- Contemporary Glass in Australia* at Sabbia Gallery with other glass artists Matthew Curtis, Jeremy Lepisto, Mel George and Lisa Cahill. The exhibition explores the work of these artists that have been investigating the use of components, parts, segments and elements in their work exhibition runs until February 20th. Nick Mount and Tom Moore are preparing for big years with Tom travelling to Pilchuck to teach a workshop and present at the Glass Art Society Conference in Louisiana. Tom will also be having an exhibition at Helen Gory Galerie in Victoria which will run from March 10th to April 3rd. Nick will also be travelling this year to Corning and Pittsburgh to teach workshops. The Jam are also looking forward to the arrival of Canadian glass artist Katherine Gray in July of this year. Her workshops are expected to be popular and Ausglass will be organising an event to coincide with her visit. Matt Burgess recently had his solo exhibition *Everything we Breathe* opening at Michael Reid Gallery in Sydney on February 3rd. Mariella McKinley will be exhibiting a solo show of new work in Jam Factory's Atrium Space opening on Thursday February 25th.

Glass students from UniSA have been selected to participate in the first inaugural student prize at Wagga Wagga Art Gallery. Artists participating include Christopher Boha, Llewelyn Ash, Amelia Knight, Simon Butler, Derrise Hemmes, Zoe Woods and Craig Taylor. The National Glass Gallery at Wagga has also recently purchased one of Gabriella Bisetto's works for their permanent collection. Gabriella Bisetto, Jess Loughlin and Deb Jones will be participating in a group show in Jam Factory's main gallery *Mind over Matter* in early April. As a representative of AsiaLink Jess Loughlin recently travelled to Manilla where she was involved in a touring exhibition *White Hot*.

Gerry King has been appointed as consultant to the Tasmanian Craft Fair and is negotiating the presentation of the exhibition, *3 Nations: Asian Contemporary Glass Art*, curated by Sung-Won Park, Professor of the Department of Fine Art and Vice Dean of the School of Visual Arts, Korean National University of Arts, Seoul, Korea. The exhibition is managed by Koru Contemporary Art, Hong Kong and shows works from China, Korea and Japan, [including Taiwan]. It may be available to travel in Australia. Gerry is a judge of the Premier's Award for an art/craft piece with a prize of \$10,000. Gerry exhibited at Despard Gallery, Hobart in the Annual Summer Show.

In March Adelaide will be hosting the Bowerbird Bazaar, a design market that will be held in the Queen's Theatre on Playhouse Lane that a few of the glassies will be involved in so if you're around town from 26th-28th March be sure to pay a visit.

TAS – Leigh Roberts.

TASREP@AUSGLASS.ORG.AU

Greetings Everyone,

Not a lot to report on this quarter in relation to 'glass happenings' in Tas.

The challenging, entertaining and adventurous MONA FOMA (Festival of Music and Art) stirred up the cultural scene in Hobart for over 2 weeks in January. Over 30,000 people visited the mostly free, top class events John Cale was the major 'Artist in Residence'. Next year's festival will be even bigger as it will include the opening of the international standard 'Museum of Old and New Art'. Come to Hobart for some pre Conference inspiration in 2011!

In January I attended an extremely worthwhile Ausglass meeting in Sydney and enjoyed getting to know the people who voluntarily keep our Association viable.

Merinda Young has kindly contributed the following information.

Following the excitement of getting the mobile hot glass studio up and running for the Deloraine Craft fair, Keith Dougall has spent the last couple of months working flat out to get his "real" studio finished at Poatina. The gas fitter finished with just days to spare before the first scheduled beginners workshop began.

As part of the annual "Faith & the Arts" conference held at Poatina, six very enthusiastic beginners had the opportunity to be the first people to use the facility in the first week of the new year. Merinda Young came up from Hobart to assist Keith organise the workshop. Alex Frasersmith (student at Canberra) was vital as a second teacher to Keith. In 5 hot days the participants learnt basic hot glass processes including sand casting, making 'bit men', even making basic tumblers.

It is great to see the facility available for teaching hot glass and future workshops are planned. Keith is trying hard not to remember that in about 18 months he will move it all to a new building...

VIC – Beth Wheeler, Nadia Mercuri and Ebony Addinsall

VICREP@AUSGLASS.ORG.AU

Happy New Year!

We are excited to welcome Ebony Addinsall (see right) as the 3rd State Rep for Victoria, please don't hesitate to contact Ebony, Nadia or Beth if you have any suggestions or questions.

In January we travelled to Sydney for the AGM and a face to face meeting with all the state reps and board members. There were many exciting developments and ideas Ebony Addinsall discussed including the 2011 conference. We will hold a state meeting in the shortly where we shall be able to bring you further details.



Ebony Addinsall is exhibiting her blown vessels at Walker St Gallery alongside textile artist Mandy Gunn, Cnr Walker & Robinson Sts, Dandenong, until 23rd February 2010. www.walkerstgallery.com.au

Emma Borland (bottom left) is currently exhibiting at Maroondah Art Gallery. Emma takes a unique approach to her chosen medium of industrial recycled glass. The artist's passion for Outsider Art, observations of human behaviour, and insight into emotional interiors, are all direct sources of inspiration for her expressive glass sculptures. The exhibition runs from 21 Jan 2010 - 27 Feb 2010. <http://www.artsinmaroondah.com.au/464.htm>



Congratulations to Susan Moore (left) from Victoria for winning the Vicki Torr Online Gallery Prize. (see profile)

Kristin McFarlane is currently working towards the 'powerHOUSE' exhibition at the Canberra Glassworks which opens in March. One of Kristin's glass books has been shortlisted for the 2010 Libris Award which opens at Artspace Mackay, QLD, in April.

Lisa Krivitsky's work My Mother's Eye (see below) is on show at Glass Plus Gallery, Lisa was the winner of Glass Plus Gallery's prize for Outstanding Glass Student 2009, Monash University.



"Glass Plus Gallery of 284 Park Street, South Melbourne is offering its large, attractive window space as an exhibition space for individual glass artists. The window exhibitions would be for 2-3 weeks and the artist's work would be promoted locally as well as via the gallery's website and networks. Artists interested should contact the gallery director Denise Orchard on 96964776



Congratulations and good luck to the students from Monash University Glass Studio who have been selected for the inaugural National Student Art Glass Prize Exhibition at Wagga Wagga Art Gallery, opening in March 2010. These include Jasmine Targett, Janine Tanzer, Kirtsin Costello, Emma Borland, Tegan Hamilton, Karina McDonald & Samantha Cuffe.

Brenda Page at Blue Dog Glass Studio is running a one day workshop that will take you through the basics of kiln building, which you can then apply to building bigger and better kilns down the track. But to kick you off you will take home a kiln with controller as part of the course. We will introduce you to some of the "science" of power, heat and insulation and the most useful concepts and materials.

Date: Saturday 27th 10am onwards cost \$1635. Cost of the course includes all materials, kiln controller and kiln. Places are limited to 6. For more information Phone 03 9553 4434 or visit www.bluedogglass.com.au



Don't forget to check out Ausglass Victoria's Facebook group.....just log into facebook, search for Ausglass Victoria & join!

:: Coming up ::

A solo exhibition of new works by Emma Varga at Kirra Gallery
From the Garden
4 March 2010 to 4 April 2010

A solo exhibition of new works by Maureen Williams at Beaver Gallery, Canberra.
4 March 2010 to 23rd March 2010

A postcard from Corning

WA – Greg Ash

WAREP@AUSGLASS.ORG.AU

- WA held its Xmas party at Greg Ash's place with 28 members in attendance. He was forced to clean up for the event so Suzanne, his wife was very appreciative as artists tend to collect clutter
- The Old Bakery on 8th has "A touch of Glass" exhibition starting on 4th April and running to May 2nd with 27 WA glass artists in the exhibition. All but a few are Ausglass members.
- Su Bishop finished second in the Vikki Torr prize with her superb bead and silver necklace. If you haven't seen it then check out the Ausglass gallery.
- The Mill Gallery in York will be opening weekend markets in March. Anyone interested in having a stall should contact Louise or Dale on 9641 2900 or visit the website at <http://theyorkmill.com.au/>
- Alasdair and Rish Gordon have just finished the first of two engraving workshops at Canberra Glassworks held from 1st-7th Feb. The workshop was partly sponsored by Ausglass as the skills that Alasdair and Rish possess must be passed on. A small exhibition of their work and a talk was also held. Due to the over subscription there will be another workshop later in the year.
- Alasdair also won the York Society's Glass Prize last year and the City of Melville acquired his piece, "Kangaroo Paws" as he also won their award. Any council would love to have a piece of Gordon engraved or cameo work from either Alasdair or Rish.
- Laurie Fossier-Mills has been accepted into Kirra Galleries with her pieces Beach Gecko Pockets (see above) which is a fantastic achievement to be in such a prestigious gallery.
- Philomena held a second exhibition at George and Helen Hayward's Gallery in December. She must be working 24/7 to keep up with the volume of work.



Vicki Torr Online Gallery Prize Winner Artist Profile

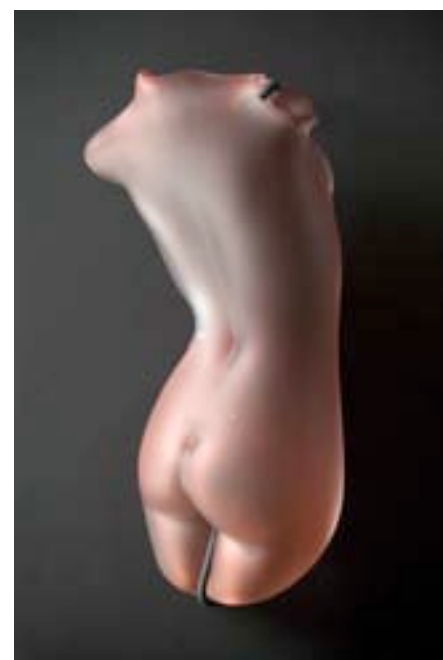
Susan Moore

After completing studies in Interior Decoration and Design at RMIT I began working in the home wares industry, establishing a business hand painting and wholesaling glassware. It was through this career that my interest in glass and glass art developed.

I carried out my studies in glass blowing at Monash University in Melbourne. Instantly seduced by the material, I was captivated by the unpredictable nature of the glass and the technique required in order to manipulate and sculpt the medium.

I am inspired by classical sculpture and the beauty and precision that each sculpture possesses. I use the human figure as a means to portray the beauty in glass.

In the making of my blown, sculpted figures, I am able to constantly challenge myself and explore new techniques. With the use of specialized instruments, tools and localized heat, I manipulate the glass to create the form. I enjoy the physical and mental challenge that each figure presents me with, as I strive to create a sense of balance and proportion.





Many of the figures are cut and cold worked in order to create an archaic appearance representational of a fragment of classical sculpture. The piece is then acid dipped, accentuating the form.

(Above) 'figure study 3' wallmounted 260mm high
 (Left) figure study 4' wallmounted, 220mm high

I have recently been taking time away from the studio in order to be home with my 2 year old son and 7 month old daughter. I would like to take this opportunity to thank everyone who voted for me in the Vicki Torr online gallery prize. The prize money will go toward getting back in the studio to carry on where I left off. I am looking forward to creating new work.

Gallery Profile

glass plus gallery
 284 park street south melbourne 3205
 tel: 03 96964776 mob: 0419556476
www.glassplusgallery.com.au

For Denise Orchard, the owner of Glass Plus Gallery the establishment of this gallery was the realization of a dream which had its genesis in a love of the complex and infinite beauty of glass. The gallery is located in the heart of the historic Emerald Hill precinct in South Melbourne and the premises has been renovated to provide a perfect canvas to display beautiful hand crafted glass and jewellery objects.

Established in late 2005 the gallery offers a range of contemporary glass art and jewellery by established and emerging artists from across Australia with a special emphasis on Melbourne and Victorian based artisans. The gallery currently has work by some 40 artists with a continuously changing offering.



Denise Orchard is a keen supporter of the creative talent of young artists and annually provides a substantial cash prize to an outstanding glass graduate from Monash University. Lisa Krivitsky (see VIC State report) was the 2009 recipient.

Denise's enthusiasm for the work of the artists represented is shared with all visitors to the gallery and in her words "each visitor provides an opportunity to increase the profile of the contemporary glass movement in Australia".

The gallery holds a small number of exhibitions each year; arranges commissioned works and provides a design service for clients.

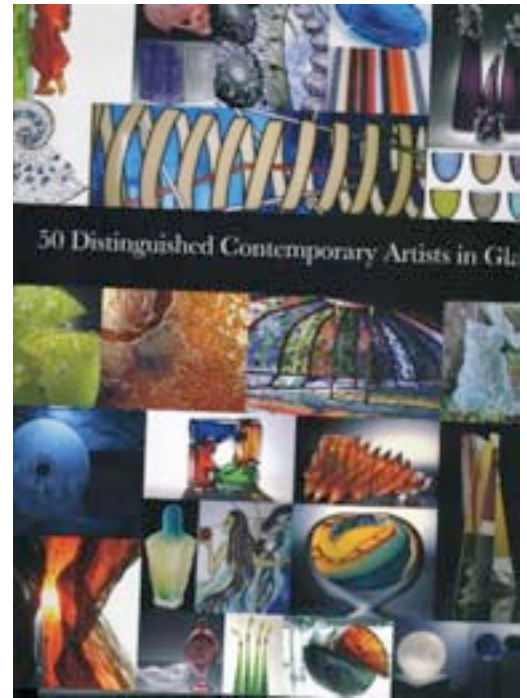
Book review

"50 distinguished Contemporary Artists in Glass" by Dr. Judith Neiswander Review by Stephen Skillitzi.

First published by Intelligent Layman Publishers Ltd., U.K., in 2006 this 119 page basically-photographic effort, retailing for \$90, was only recently brought to my attention. In its forward Neiswander disarmingly states: "...we welcome any criticism of what we are attempting to do." "OK!", I ask. "Why not comply via Ausglass, since 9 Australian and 3 N.Z glassies were in the selected 50?". In order of their presentation: Aldrete-Morris, Turrin, King, Elliot, Dunn, Grunseit, Chaseling, Skillitzi, Shaw, and from across the 'water-trough', Camden, Anderton, Smith.

Straightaway the neglected host of other obvious Antipodean 'glass worthies' springs to mind. That unease about doubtful balance is reinforced on glancing at the other 38 inclusions.... 25 from the book's home territory of the U.K., a mere 6 from the U.S.A., (namely Janis, Stankard, Mickelson, Dee Edwards, Drier, Tate) and 1 each from Belgium, Canada, Denmark, Finland, Iceland, Italy, Japan.

From the over-hyped back-cover blurb... often intended, (in time-honoured 'rip-off' fashion), to seduce a trusting sealed-book sale prior to effective consumer consideration we learn:- "A distinguished appraiser in glass chose 50 artists who, in his opinion, represented the best work of their generation.... We invited over 500 contemporary artists in glass to submit examples of their work..." . Suspiciously, nowhere is the "appraiser" identified by name. Why? Quite possibly, the response to the worldwide invitation was so uneven and sparse... supposing it was just a few more than 50... that he realized the stain to his reputation if identified personally with him. Indeed the 'roller-coaster' irregularities in page formatting, in photo quality and quantity, in descriptive text (often touting naive emerging artists' hopes for yet-future achievements), together gave the impression of a deadline-driven first-draft rushed to print with whatever was on hand. In the paradigm of "publish or perish!" it is sad how often wanna-be 'glass-world' surveys end up falling far short! Still, 4 years after its publication, inevitably the coveted 'collectors' spotlight has other allegedly "authoritative tomes" in current focus... thankfully. Not so well done, Neiswander!



Response to Stephen Skillitzi's review from Halina Wlodarczak

Stephen,

Thank you for sending me your "take" on the book and sharing your point of view. I can not agree more with what you wrote. During my holiday I went to see [at the Art Gallery of S.A.] the Brack exhibition and also the Bravura (strange choice of name for what I have seen exhibited...), and after my pleasurable wandering I went to check if they had the book on distinguished artist's in glass, you mentioned before Christmas. They had - it was already in the display and I looked through it, found the pages dedicated to you and could not stop my disappointment as I expected definitely more text. I did not buy because I did not have enough time for a closer look.

My experience with the art publications is very extensive and my Diploma in Librarianship was dedicated to the art series (Polish and international publications). Thousands of art books went through my hands and I trust my intuition and my mixed feelings regarding this glass publication stopped me from buying. I will still have another look at it because it is interesting to see what people are making in the world. I was surprised there was nobody from Czech/Slovakia or Poland.

Saying that I think, it is always great when books on glass artists are published because it is one more source of information on glassmakers, and the glass medium itself, and the average art lovers will learn more, and accidental readers maybe will be inspired and encouraged to look closer into glassmaking.

I really like your review.....

Regards,
Halina

Halina Wlodarczak is a part time artist and full time librarian/teacher for Adelaide's Migrant Education Program. She critiques books/periodicals and is often dismayed at low publication standards.

Exhibitions and events



Townsville is host to the inaugural BEAD, GLASS & CRAFT FESTIVAL that will be held 17 - 25 July 2010 at the Townsville Entertainment & Convention Centre. The festival is the first of its kind to be held in Australia. The 9-day festival will be packed with something exciting and new for all glass and bead enthusiasts. Participants will be amazed by some of the most renowned hot glass, flame work and wirework jewellery on show.

There will be 22 artists in all. 14 Americans & 8 Australians. All artists will be facilitating in 119 classes to cater for everyone from beginners through to the most advanced. No festival in Australia has presented such a wide range of classes at one place at the same time.

These classes have been programmed over the 9 days of the Festival that will also feature a Monster market for the last three days. At the market there will be exhibitors from Australia and America. Stallholders from all around Australia will be selling and displaying an exciting range of items.

The Time has now come to BOOK YOUR CLASSES

See our website www.beadzbitzbobz.com.au or call 07 47288626 for further information on Classes or Markets Stalls

Gay Kotvojs, Belinda Wright
Festival Directors

Kent Lauer
US Event Coordinator

Workshops, demos and Masterclasses

Attitude of Mind: Learning copper wheel engraving with Alasdair Gordon

by Itzell Tazzyman

Trained in Art and Design and specialising in copper wheel engraving at the Edinburgh Collage of Arts, Alasdair Gordon has been an engraver for almost 60 years. Assisted by his artist wife Rish, Alasdair gave a week long master class at the Canberra Glassworks. It is rare these days to have the opportunity to learn this traditional skill. One can study at specialised technical high schools in countries like Germany and the Czech Republic, where wheel-engraving is part of glass-making traditions, but in this climate of shifting global economics and focus, even these few precious schools are under threat.

Organised by artist Holly Grace and supported by AUSGLASS and the Canberra Glassworks, 8 glass artists came together to share and learn, some travelling from as far as Korea and the USA. I have just returned from a Churchill Fellowship in Czech, with a focus on studying engraving techniques, and making for me the Canberra workshop with a master Australian engraver all the more resonant and poignant.

Wheel engraving is the most delicate of all cold glass working processes. It requires combined skills in drawing and sculpting as well as a technical affinity with machines and toolmaking, and an incredible simultaneous deftness, confidence and lightness of touch. It is very demanding and concentrated work, but learning with Alasdair and Rish made it (at least appear) simple and fun.

The class had a very practical focus. We began with an introduction to the Spatzier lathes and the types of copper wheels. Each student was given an understanding of the wheel profiles, how to maintain them and the engraved mark each profile creates. Making wheels from start to finish was also covered. We were given simple projects to undertake, to illustrate how to use and select the correct wheels for intaglio, relief and cameo engraving work. Alasdair and Rish revealed themselves to be natural and generous teachers, giving practical and clear comments, guiding each one of us towards improvement not matter what our skills and experience. Learning to listen to the wheels at work and moving the hands with soft pressure is a beginners greatest challenge, but according to Alasdair it comes with mindfulness, time and practise. If enthusiasm also counts then we all had that in spades.

The Gordons and the Canberra Glassworks intend to have another copper wheel engraving workshop later this year, so stay tuned. The enthusiasm and response from the studio glass community to traditional technique may have gone some way to allaying Alasdair's belief that as a copper wheel engraver, he was fast becoming an extinct species!

Alasdair and Rish Gordon have worked as engravers in Scotland and Norway, emigrating to Australia in 1980. They established Gordon Studios in Fremantle WA.

Itzell Tazzyman lives and works in Canberra.



Tom Malone Prize 2010

The Tom Malone Prize, now in its eighth year, is a highly anticipated, highly significant, event on the calendar of Australia's glass artists.

Above *Charles Butcher* joint winner 2009
Below *Cobi Cockburn* joint winner 2009

The Prize was initiated in 2003 by Benefactor of the Foundation of the Art Gallery of Western Australia, Elizabeth Malone, and is intended to promote the creation, appreciation and enjoyment of glass made in Australia. Each year, \$10,000 is awarded to the winner and the winning work then becomes part of the State Art Collection at the Art Gallery of Western Australia.

The Art Gallery of Western Australia is pleased to announce the shortlist the Tom Malone Prize for 2010, an Acquisitive Prize for Glass Artists in Australia. They are as follows;

Peter Bowles, Lisa Cahill, Brian Corr, Tegan Empson, Deidre Feeney, Penny Fuller, Holly Grace, Sheena Larsen, Nick Mount, Ben Sewell, Belinda Toll



GOLD COAST CHINA

Email: Sandra@goldcoastchina.com.au

Ph: (07) 5597 0849

Website: www.goldcoastchina.com.au

Gold Coast China, situated on the Gold Coast, Queensland, is one of Australia's largest supplier of products for On Glaze Decoration and Glass Fusing. Gold Coast China has operated for over 25 years and is owned by Sandra De Leacy a China Painter and Glass Artist for over 20 years.

- Glass Fusing/Over Glaze paints – over 400 colours - made in Germany
Firing Range 750-800
- Metallic Paints – suitable for Glass Fusing and On Glaze Decoration
Firing Range 780-820
- Lustres and Gold – Our gold and lustres are always fresh and of the highest quality
Firing Range 750-800
- Glass paints – Opaque and Transparent– 560- 600 deg firing range
- Glass Crystals – 560 – 600 deg firing range
- "Glass" paints and "Glass Crystals" are for the final decoration of glass
- Gold, Platinum and lustres for a 600 deg firing range.
- Natural Hair Brushes – Hand made in Germany from the finest quality materials
- Texture Pastes – Firing Range 800 deg and 600 deg available.
- Tools, Oils and Mediums – To assist with On Glaze and Glass decoration
- Full Product Listing available

Please do not hesitate to contact me if you have any queries about our products.

SPECIAL INTRODUCTORY OFFER: \$23.95 (Value \$30.60)

Mix of 3 Fusing paints, 2 Opaque Glass Paints (600 deg), Glass Crystals and a bottle of medium for mixing the paints. With the kit I will supply instructions.

introducing the;

GLASSMASTER

flat bed glass grinder

NEW



Shown with bristle ring fitted for cleaner operation



- 14" Wheelhead with easy-fit steel disc – takes standard magnetic grinding disc
- Infinitely variable speed 0 - 900rpm
- Powerful 1/2hp motor with industrial inverter drive and 60% overload capacity
- Long life aluminium tray with large drain hole
- Stainless steel frame
- Optional seat available
- Polycarbonate lift up cover for safe operation on the grinding disc
- Risers for lifting the grinding surface above the edge of the tray for working larger glass items
- Water supply tap with flexible nozzle

venco
www.venco.com.au

Proudly made in Australia by **VENCO PRODUCTS**

\$1995 (plus delivery & GST)

For more information, please contact the manufacturer;
Ph (08)9399-5265 email: info@venco.com.au

Exhibitions

AUSTRALIA

ACT

Altered Views - Maureen Williams

Recent landscape inspired works.
Beaver Galleries, Deakin
4/23/10-23/3/10
T: 02 6282 5294
W: www.beavergalleries.com.au



Stack - Jonathan Baskett

New work made in collaboration with Nouvel Glass Studio, Mexico
Gallery 2 - Craft ACT: Craft and Design Centre, Civic
11/2/10-20/3/10
T: 02 6282 9333
W: www.craftact.org.au



Made in Japan - Elizabeth Kelly

A body of work from Kelly's residency at Seto International Ceramic and Glass Art Centre, Japan
Crucible Showcase - Craft ACT
11/2/10-20/3/10
T: 02 6282 9333
W: www.craftact.org.au



Of Silence and Light - Brian Corr.

Solo work exploring a world of light and shadow, volume and void.
Canberra Glassworks, Kingston
3/2/10 - 11/8/10
T: 02 6260 7005
E: contactus@canberraglassworks.com
W: www.canberraglassworks.com



powerHouse

Installations exploring the heritage of the Kingston Powerhouse, curated by Narelle Phillips. Artists include Deirdre Feeney, Nicholas Folland Bjorn Godwin, Simon Maberley, Kristin McFarlane, Trish Roan.
Canberra Glassworks, Kingston
3/2/10 - 11/8/10
T: 02 6260 7005
E: contactus@canberraglassworks.com
W: www.canberraglassworks.com



QLD

Tour de Force: in case of emergency break glass

Work by Nicholas Folland, Jacqueline Gropp, Tim Horn, Deb Jones, Tom Moore, Ian Mowbray, Patricia Roan and Neil Roberts.
Curated by Megan Bottari
Artisan Gallery Fortitude Valley
11/2/03 - 17/4/10
T: 07 3215 0800
E: info@artisan.org.au
W: www.artisan.org.au



NSW

GATHER

Ausglass & National Art School Awards Exhibition

Works in ceramics and glass by the recipients of the National Art School and Ausglass awards, including Lee Mathers and Ruth Oliphant
Sabbia Gallery, Paddington
19/1/09 - 20/2/09
T: 02 92 81 47 17
E: gallery@sabbiagallery.com
W: www.sabbiagallery.com



Richard Morrell - Recent Works

New works which pursue the artists interest in the bowl as a vehicle of expression.
9/3/10 - 26/3/10
Glass Artists Gallery, Glebe
T: 02 9552 1552
E: mail@glassartistsgallery.com.au
W: www.glassartistsgallery.com.au



The National Student Art Glass Prize

(NSAGP) is a competition established to reward and promotes innovation and excellence in contemporary glass within the student sector. This biennial prize has been initiated by Wagga Wagga Art Gallery, with the inaugural exhibition opening on 12 March 2010.
National Art Glass Gallery, Wagga Wagga
12/3/10 - 6/6/10
T: 02 6926 9660
E: gallery@wagga.nsw.gov.au
W: www.waggaartgallery.org



SA

Mind And Matter: Meditations On Immateriality

Masahiro Asaka, Gabriella Bisetto, Brian Corr, Mel Douglas, Deb Jones, Jessica Loughlin, Janice Vitkovsky, Richard Whiteley
Jam Factory Craft and Design Centre, Adelaide
10/4/10 - 16/5/10
T: 08 8410 0727
E: contact@jamfactory.com.au
W: www.jamfactory.com.au



VIC

From the Garden

A solo exhibition of new works by Emma Varga
Kirra Galleries, Melbourne
4/3/10-4/4/10
T: 03 9639 6388
E: kirra@kirra.com
W: www.kirragalleries.com



10 Contemporary Australian Artists :A glass act

An exhibition of sculptural glass curated by Sandy Benjamin and Caroline Field. Artists include Clare Belfrage, Cobi Cockburn, Mel Douglas, Tim Edwards, Wendy Fairclough, Brian Hirst, Jessica Loughlin, Kirstie Rea, Tom Rowney and Richard Whiteley.

Australian Galleries, Melbourne

11 /3/10 – 28/3/10

T: 03 9417 0800

E: enquiries@australiangalleries.com.au

W: www.australiangalleries.com.au



INTERNATIONAL

DENMARK

Inner View - Masayo Odahashi

Figurative works reflecting on the calm and meditative theme
Glasmuseet Ebeltoft. Denmark
12/32/10 – 13/6/10

T: +45 86 34 17 99

E: glasmuseet@glasmuseet.dk

W: www.glasmuseet.dk



GERMANY

Pure and Wild

Exhibition by Bernard Dejonghe
Galerie B, Sinzheim/Baden-Baden
25/2/10 - 25/6/10

T: +49 – (0) 7221 – 85585

W: www.galerieb.de

E: GlasgalB@aol.com



JAPAN

Which? : Compare and Enjoy Contemporary Glass

Koganezaki Crystal Park Glass
Museum, Shizuoka-ken
16/1/10 - 13/5/10

T: 81 558 551 515

E: k-museum@kuripa.co.jp

W: www.kuripa.co.jp



NEW ZEALAND

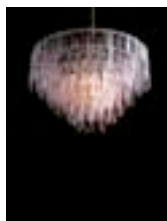
Looking Glass; reflecting ideas

21 New Zealand Artists, curated by
Grace Cochorane and Greg Donson
Sarjeant Gallery, Whanganui
12/12/09 - 24/3/10

T: + 64 6 349 0506

E: info@sarjeant.queenspark.org.nz

W: www.sarjeant.org.nz/



UNITED KINGDOM

Kosta Boda at the National Glass Centre

Bertil Vallien, Kjell Engman and
Göran Wärff

NGC Shop, Liberty Way,
Sunderland

11/1/10 - 19/4/10

T: + 0191 515 5555

E: info@nationalglasscentre.com

W: www.nationalglasscentre.com



USA

e-merge 2010

A juried kiln-glass exhibition
for emerging and
intermediate-level artists,
including Kate Baker and Lee
Mathers

Bullseye Gallery, Portland

3/11/09-29/12/09

T: + 1 503 227 0222

W: www.bullseyegallery.com



Incoming! Selections from the Permanent Collection

Exhibition devoted to
showcasing the Museum's
Permanent Collection of 20th
and 21st-century glass
Museum of Glass, Tacoma
16/5/09 - 5/7/10

T: + 1 253 284 4750

E: info@museumofglass.org

W: www.museumofglass.org



Masters of Studio Glass- Jiří Harcuba

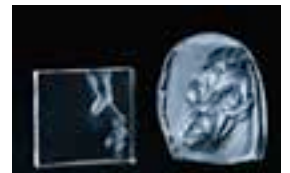
Exhibition by the widely-
respected Czech artist and
teacher who is internationally
known for his portraits in
engraved glass

27/3/10 - 31/10/10.

T: 00 1 607 974 8308.

E: info@cmog.org

W: www.cmog.org



Fifty Years of Contemporary Glass: Art, Craft, or Otherwise?

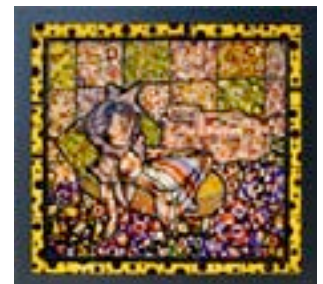
Includes works from the
Adele and Leonard Leight
Collection,
25/4/2010 – 2/8/2010

Speed Art Museum,
Louisville Kentucky

T: + 1 502 634-2700

E: info@speedmuseum.org

W: www.speedmuseum.org



OPPORTUNITIES

Call for Entries

Craft Victoria - Call for Submissions

Proposals are now being sought to exhibit at Craft Victoria in the first half of 2011. Craft Victoria welcomes proposals for individuals and groups who wish to participate in our exhibition program. Proposals are examined by an advisory panel with diverse expertise. Applicants are encouraged to discuss their proposal beforehand with Craft Victoria staff.

Closing date: 31/3/10

T: 03 9650 7775

E: craftvic@craftvic.asn.au

W: craftvic.asn.au

Tasmanian Craft Fair

Applications are now open for the Tasmanian Craft Fair 2010 (TCF2010) showcases the work of top craftspeople from all over the world, with 200 stalls in 13 venues throughout the township of Deloraine. Stallholder applications are now open, with forms available from the website

Closing date: 1/4/10

E: info@tascraftfair.com.au

W: www.tascraftfair.com.au

CRAFT ACT – Exhibition Proposals

Craft ACT is calling for exhibition proposals to exhibit in the 2011 program. For more information contact Diana Hare, Curator/Exhibitions Manager Craft ACT Craft and Design Centre, Canberra

Closing date: 26/4/10

T: 02 6262 9333

E: diana.hare@craftact.org.au

W: www.craftact.org.au

Funding Opportunities

New Work Grants – Visual Arts

Australia Council for the Arts

New work grants support the creation of new work by emerging and established craftspeople, designers, media artists, visual artists and arts writers. Where the main focus of the project is new work, proposals may be submitted for costs incurred in making or researching new work or with the development of work for an exhibition, production and/or publication.

Closing Date: 14/4/10 established, 16/4/10 emerging

T: 02 9215 9000 or toll free 1800 226 912

Email mail@australiacouncil.gov.au

Web: www.australiacouncil.gov.au/

NAVA – The Janet Holmes à Court Artists' Grant

Provides financial assistance to professional artists for the public presentation of their work. Up to \$500 for Individuals and \$1000 for groups.

Closing date: 15 May 2010 for exhibitions in August/September/October

T: 02 9368 1900

E: nava@visualarts.net.au

W: www.visualarts.net.au/grantsprizes/vcags

GLASS CASTING on the lagoon

This is a unique opportunity to study with the artist in her studio by the sea. Take home a wealth of knowledge as well as some new cast sculptures, & have a great weekend getting the creative juices flowing. The 2 day workshop will take students on an intensive journey into the creative possibilities of kiln cast glass. The instructor will demystify the casting process by teaching how to model & form positives in clay & polyurethane to make simple open moulds. The use of Gel-Flex rubber will also be used. This course will cater to all levels of ability.

**Dates: 20 & 21/06 15 & 16/09
21 & 22/11**

*****Dates subject to change depending on enrollment**

Places are limited to make sure everybody has access to tuition and use of equipment and for safety reasons. Workshop will be 2 days of 6 hours each from 10-4
Fee is \$340

Course fee includes all materials, equipment & firing costs.

GLASS BLOWING on the Lagoon

These 2-day workshops are the perfect beginning to discover the excitement of working with hot glass!! Come and join us for a weekend foray of fun into the mysteries of the age-old art form of glass blowing. Conjure images of the first Syrian blowers, Greek and Roman artisans and on to Venice, the Art Nouveau movement... YOU'LL LOVE IT!

The workshop will explore the basics of glassblowing and is aimed at beginners. Anyone who wishes to learn glassblowing at the furnace is invited to participate. No experience is required. Students will learn how to gather and marver, shape and blow glass and how to use the appropriate tools through basic exercises and practice. Use of colour will also be explored. Several short demonstrations and plenty of background information will be given. Students will need to be ready to work in teams and have fun!!!

Dates: 26 & 27 /09 21 & 22/11

*****dates subject to change depending on enrollment**

Places are limited to 4 persons to make sure everybody has access to tuition and use of equipment.

Workshop will be 2 days of 6 hours each from 10-4
Fee is \$460.00

Course fee includes all material and equipment.

www.sallieportnoyglass.com.au

Phone 0418 279 518

PO Box 4018
McKinnon VIC 3204
ABN 72 087 134 656
www.ausglass.org.au

The AUSGLASS Board

Keith Rowe

president@ausglass.org.au

Simon James

vicepresident@ausglass.org.au

Ebony Addinsall

secretary@ausglass.org.au

Greg Ash

*State Rep Liaison
Members Services*

Lisa Cahill

newsletter@ausglass.org.au

Andrew Lavery

*Sydney Conference
Committee Chair*

Simon Maberly

*Members Services
Assistant Newsletter Editor*

Marian Schoen

Strategic Planning

Website Managers

Arthur Sale & Julien Stannus

About the newsletter

The Ausglass newsletter is produced on a voluntary basis. All care is given to submissions and it is the editor's discretion what will & won't be published. It is published quarterly and distributed via email around the 15th of February, May, August and November or via post shortly after.

The Deadline for the next edition is 29 April 2010

From the Editor's desk

Dear Members,

A big apology for the late publication, a few weeks of a back injury held me up but I'm back on track now.

Thanks for all your fantastic feedback regarding the newsletter. The comments were very helpful and hopefully we will be able to implement some of the changes you suggested. I found the feedback also very useful while we are planning what needs to be done to the website to enable it to deliver more for the members.

We always welcome submissions for the newsletter and one of the areas we are lacking is reviews of exhibitions, books or anything else of interest. The Newsletter can only be as good as your submissions. If you are or know any writers out there we would love to hear from you.

Please also send in updates on your practice to your state reps. It's a big job keeping tabs on what everyone's up to and it makes it easier to have a reminder close to the time the reports are due (every 3 months).

Lisa